



DESIGNING A REGENERATIVE GROWERS FRAMEWORK FOR IRISH FIBRE & TEXTILES

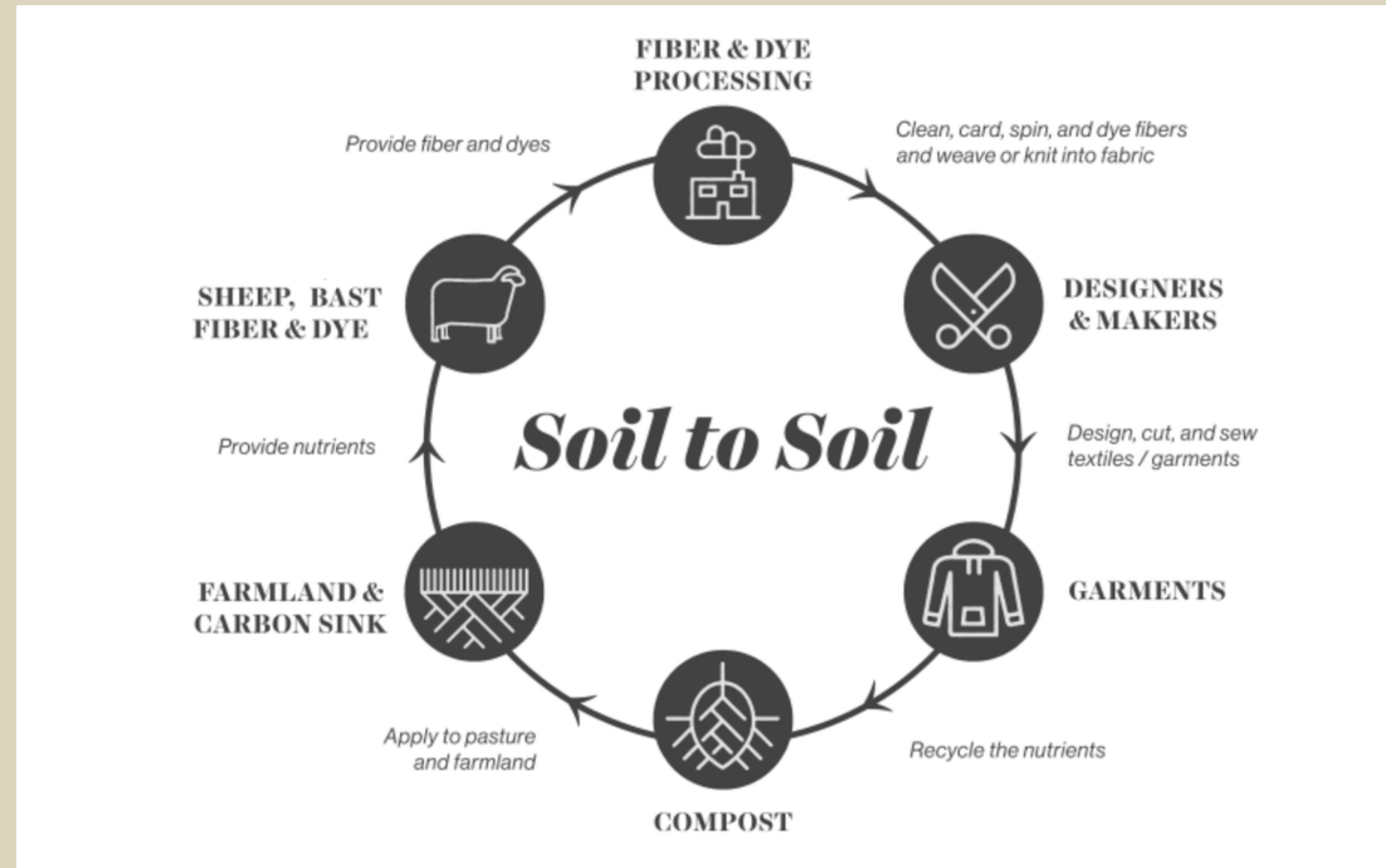


The Fibreshed Model

Fibreshed is grounded in the concept of soil-to-soil systems.



Going beyond sustainability to regenerative circularity for Irish textiles



Fibreshed Ireland was registered with Fibreshed.org in April 2022.

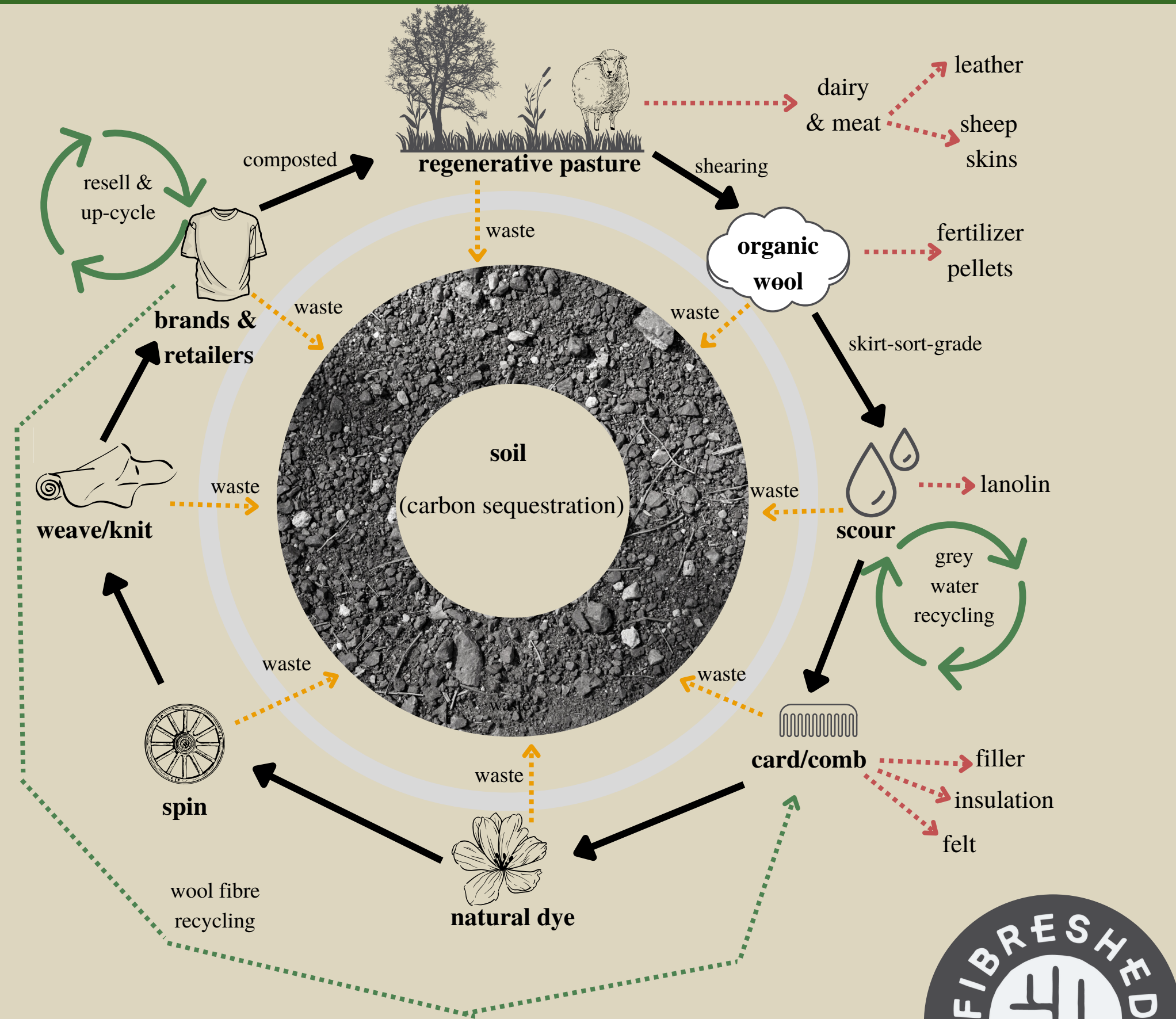


A Regenerative, Circular Framework

Irish wool as a regenerative & circular textile:

Figure 2: Diagram summarizing the circular potential of the soil-to-soil Climate Beneficial™ wool framework. The diagram summarizes the main stages of wool processing within a Climate Beneficial™ wool textile supply chain in which sheep are raised on organic, regenerative pastures. At each stage of processing, organic, biodegradable inputs (such as detergents for scouring, and plant dyes for dyeing) are used, allowing waste products (.....>) to be composted and returned to the soil. In this way, the atmospheric carbon which has been sequestered during the process of growing the wool fibre is returned to the soil. Examples of added-value by-products (.....>) are also shown, along with opportunities for up-cycling and recycling (.....> & ↻).

Source: Compiled from data gathered from the interviews conducted as part of this research paper.





Climate Beneficial Verification Program

- provides direct technical and financial support to farmers to implement carbon farming practices.
- tools include a combination of direct measurement, dynamic environmental systems models and satellite systems.
- annually track and verify increases in Soil Organic Carbon, water-holding capacity, and wildlife and pollinator habitat, as well as reductions in wildfire fuel load and herbicide and fertilizer use.

Program Overview

- 66 farmers/ranchers who collectively steward more than 170,000 acres of land
- Funded projects included rainwater catchment systems, riparian restoration with native plants and shrubs, planting a windbreak, building a compost facility, and spreading compost over croplands and rangelands among others.
- Prescribed grazing was the most widely utilized practice and was employed across 10,416 acres. Compost application on rangeland accounted for the highest amount of carbon drawdown—approximately 3,609 Mg CO₂e currently sequestered and a 20-year projection of 30,902 Mg CO₂e.



How Could We Define 'Regenerative Fibre'



**Soil Carbon
& biodiversity**



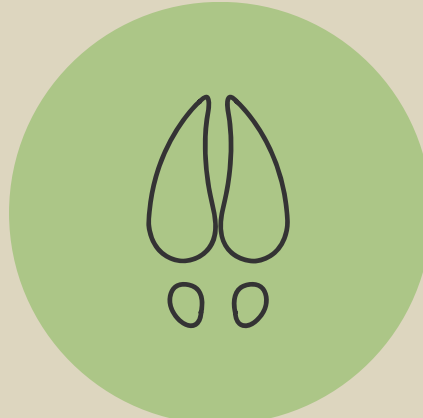
**Local
Biodiversity**



**habitat
diversity**



**riparian
resoration**



**animal
welfare**



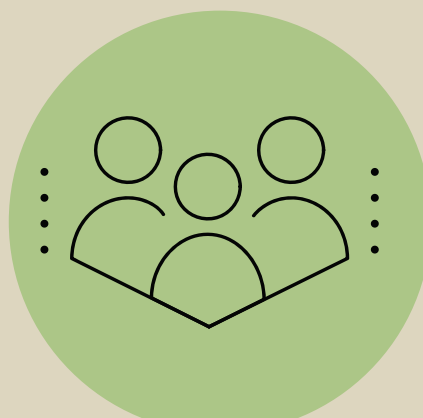
**natural
productivity**



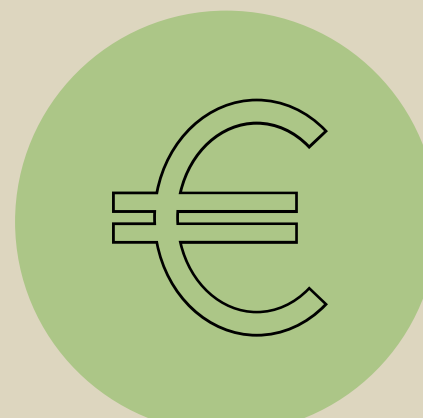
**local
knowledge**



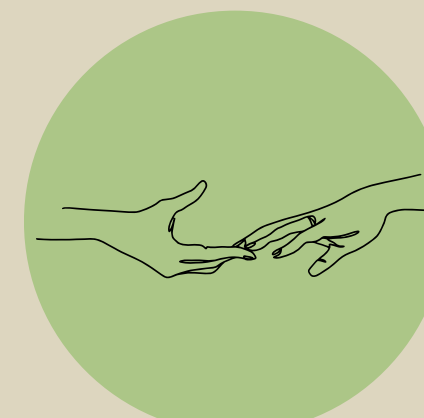
**cultural
heritage**



**community
networks**



**local
economy**



**producer-consumer
relationship**



**fibre quality
& diversity**



Starting From The Ground Up



We have received (very) basic funding to begin **researching and defining** what a regenerative framework could look like for Irish fibre and textiles.

We want to build it from the ground up to make sure it is both viable and accessible to Irish growers and farmers.

What Do We Need?

- Wool growers
- Alpaca farmers
- Flax farmers
- Dye plant growers
- Soil scientist/ecologist/advisor
- Researchers/university
- Funding

resources:

- tools: Soil sampling, carbon models?
- technicians: soil testing, surveys?
- information: fibre quality, soil?
- verification: pros & cons?



What We Are Planning For 2023



- The formation of a knowledge transfer group of growers and farmers with a passion to share experience, wisdom and ideas related to regenerative agriculture.
- Creating a holistic definition of 'Regenerative Textiles' for Ireland.
- Begin cataloguing and quality testing fibre samples and dye plants.
- Begin to measure key parameters to support the verification of and potential for regenerative agriculture in Ireland.
- National & EU advocacy for local, regenerative fibre value chains.
- Facilitate producer-designer collaborations.
- Create a national exhibition of Irish fibre products

A 6 Month Plan

Jan	<ul style="list-style-type: none">• First meeting: preliminary definition of 'Regenerative Fibre/Textile'• Identify needs, desires, challenges
Feb	<ul style="list-style-type: none">• Local biodiversity, habitat restoration & diversity, riparian/waterway restoration
Mar	<ul style="list-style-type: none">• Soil carbon & carbon sequestration, soil ecology and biodiversity, carbon footprints
Apr	<ul style="list-style-type: none">• Animal welfare, natural productivity, fibre/dye quality
May	<ul style="list-style-type: none">• Community networks, cultural heritage, local knowledge transfer, producer-consumer relationship, local economy
Jun	<ul style="list-style-type: none">• Amend definition of 'Regenerative Fibre/Textile', begin planning exhibition, identify what is needed to go forward



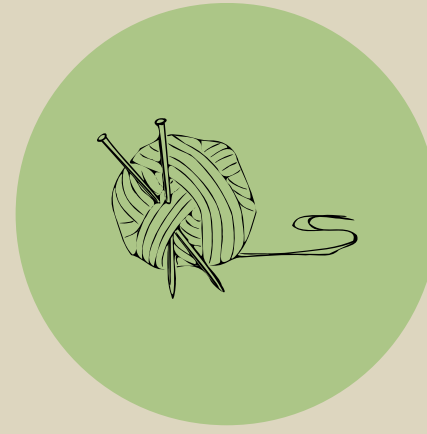
A National Exhibition in Dec



**Next-to-skin
textiles**



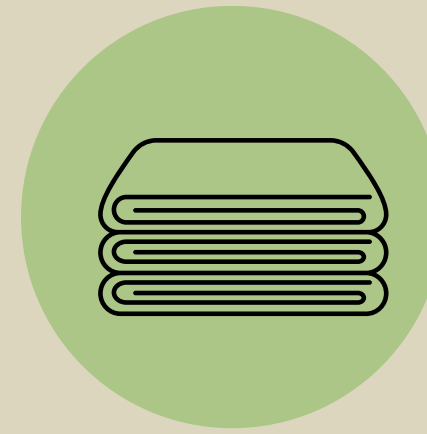
**Outer-
wear**



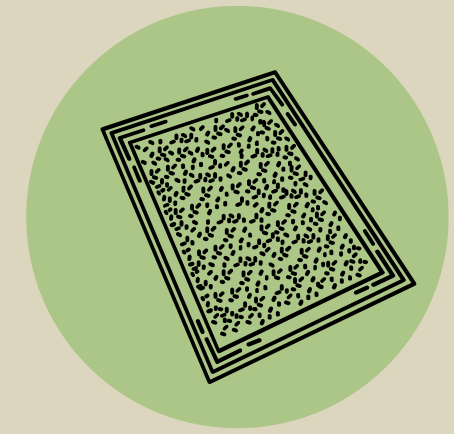
**Knitwear
& yarn**



**Woven
textiles**



**Felted
materials**



**Rugs &
interiors**



**Pillows &
bedding**



**Natural dyes
& paints**



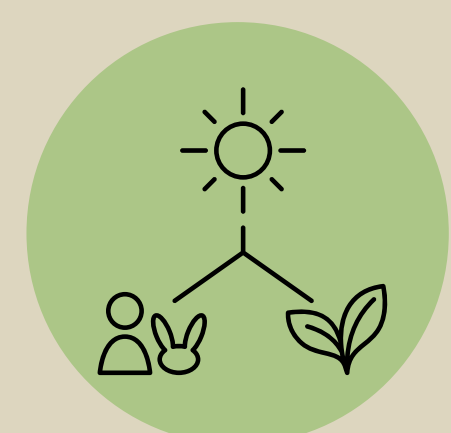
**Insulation &
construction**



**Erosion &
mulch**



**Compost &
fertilizer**



**Ecosystem
services**



What We Need From You

- 1 year commitment to the group
- Share knowledge and experiences with the group
- Become Fibreshed Ireland Producer-Members
- Willingness to implement suitable regenerative practices within your budget and timeframe.
- Donate a sample of your harvest to a Fibreshed Ireland Fibre & Dye Catalogue
- Allocate a small part of your fibre/dye harvest to the Fibreshed Ireland Regenerative Fibre & Textile Exhibition (we will reimburse you for this!)



What Do You Need From Us?



- thoughts
- needs
- inputs
- questions?

THANK YOU



**DESIGNING A REGENERATIVE GROWERS
FRAMEWORK FOR IRISH FIBRE & TEXTILES**